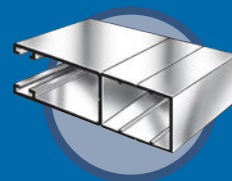
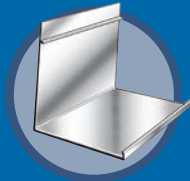
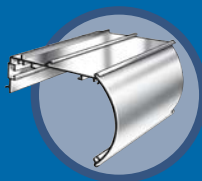
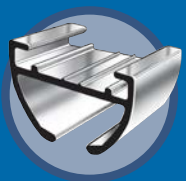


**EXTRUDE·A·TRIM**  
*The Aluminum Warehouse*

# ROLLER SHADE EXTRUSIONS

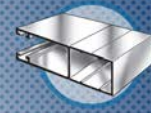


---

**RIGHT SHAPES**

**RIGHT PRICE**

**RIGHT NOW**

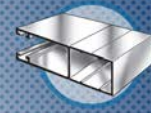


**ROLLER SHADE EXTRUSIONS**

DRAWING	PART NUMBER	DESCRIPTION				
	CP 0109	<p>1.18" TUBE</p> <table border="1"> <tr> <th>LENGTH</th> <th>FINISH</th> </tr> <tr> <td>194"</td> <td>ML</td> </tr> </table>	LENGTH	FINISH	194"	ML
LENGTH	FINISH					
194"	ML					
	CP 7114	<p>1.24" TUBE</p> <table border="1"> <tr> <th>LENGTH</th> <th>FINISH</th> </tr> <tr> <td>236"</td> <td>ML</td> </tr> </table>	LENGTH	FINISH	236"	ML
LENGTH	FINISH					
236"	ML					
	CP 7915	<p>2.5" TUBE</p> <table border="1"> <tr> <th>LENGTH</th> <th>FINISH</th> </tr> <tr> <td>236"</td> <td>ML</td> </tr> </table>	LENGTH	FINISH	236"	ML
LENGTH	FINISH					
236"	ML					
	FR 7000SM	<p>1" TUBE</p> <table border="1"> <tr> <th>LENGTH</th> <th>FINISH</th> </tr> <tr> <td>118"</td> <td>ML</td> </tr> </table>	LENGTH	FINISH	118"	ML
LENGTH	FINISH					
118"	ML					
	FR 7000LG	<p>1.5" TUBE</p> <table border="1"> <tr> <th>LENGTH</th> <th>FINISH</th> </tr> <tr> <td>196"</td> <td>ML</td> </tr> </table>	LENGTH	FINISH	196"	ML
LENGTH	FINISH					
196"	ML					

**NOTE:** Additional finishes available on request.

FINISHES: ML-Mill

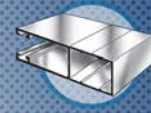


**ROLLER SHADE EXTRUSIONS**

DRAWING	PART NUMBER	DESCRIPTION				
	FR 7001	<p>1.791" TUBE</p> <table border="1"> <tr> <th>LENGTH</th> <th>FINISH</th> </tr> <tr> <td>236"</td> <td>ML</td> </tr> </table>	LENGTH	FINISH	236"	ML
LENGTH	FINISH					
236"	ML					
	FR 7004	<p>1.26" TUBE</p> <table border="1"> <tr> <th>LENGTH</th> <th>FINISH</th> </tr> <tr> <td>183", 196"</td> <td>ML</td> </tr> </table>	LENGTH	FINISH	183", 196"	ML
LENGTH	FINISH					
183", 196"	ML					
	FR 7006	<p>1.5" TUBE</p> <table border="1"> <tr> <th>LENGTH</th> <th>FINISH</th> </tr> <tr> <td>196"</td> <td>ML</td> </tr> </table>	LENGTH	FINISH	196"	ML
LENGTH	FINISH					
196"	ML					
	FR 7007	<p>1.75" TUBE</p> <table border="1"> <tr> <th>LENGTH</th> <th>FINISH</th> </tr> <tr> <td>236"</td> <td>ML</td> </tr> </table>	LENGTH	FINISH	236"	ML
LENGTH	FINISH					
236"	ML					
	FR 7008	<p>1.29" TUBE</p> <table border="1"> <tr> <th>LENGTH</th> <th>FINISH</th> </tr> <tr> <td>196"</td> <td>ML</td> </tr> </table>	LENGTH	FINISH	196"	ML
LENGTH	FINISH					
196"	ML					

**NOTE:** Additional finishes available on request.

FINISHES: ML-Mill



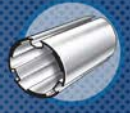
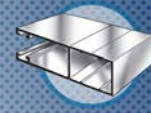
**ROLLER SHADE EXTRUSIONS**

DRAWING	PART NUMBER	DESCRIPTION				
	FR 7009	<p>1.5" TUBE</p> <table border="1"> <tr> <th>LENGTH</th> <th>FINISH</th> </tr> <tr> <td>196"</td> <td>ML</td> </tr> </table>	LENGTH	FINISH	196"	ML
LENGTH	FINISH					
196"	ML					
	FR 7010	<p>3" HEADER</p> <table border="1"> <tr> <th>LENGTH</th> <th>FINISH</th> </tr> <tr> <td>196"</td> <td>AN, BK, BZ, CR, ML, WH</td> </tr> </table>	LENGTH	FINISH	196"	AN, BK, BZ, CR, ML, WH
LENGTH	FINISH					
196"	AN, BK, BZ, CR, ML, WH					
	FR 7011	<p>2.5" HEADER</p> <table border="1"> <tr> <th>LENGTH</th> <th>FINISH</th> </tr> <tr> <td>196"</td> <td>AN, BK, CR, DB, ML, WH</td> </tr> </table>	LENGTH	FINISH	196"	AN, BK, CR, DB, ML, WH
LENGTH	FINISH					
196"	AN, BK, CR, DB, ML, WH					
	CP 7266	<p>3" FASCIA</p> <table border="1"> <tr> <th>LENGTH</th> <th>FINISH</th> </tr> <tr> <td>236"</td> <td>AN, WH</td> </tr> </table>	LENGTH	FINISH	236"	AN, WH
LENGTH	FINISH					
236"	AN, WH					
	CP 7900	<p>4" FASCIA</p> <table border="1"> <tr> <th>LENGTH</th> <th>FINISH</th> </tr> <tr> <td>236"</td> <td>AN</td> </tr> </table>	LENGTH	FINISH	236"	AN
LENGTH	FINISH					
236"	AN					

**NOTE:** Additional finishes available on request.

FINISHES: AN-Anodized, BK-Brite Black, BZ-Bronze, CR-Cream, DB-Dark Bronze, ML-Mill, WH-White

CUSTOMER SERVICE • PHONE: 888-501-8689 FAX: (416) 798-1094



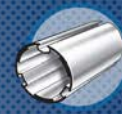
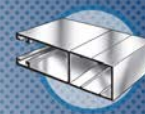
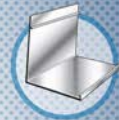
**ROLLER SHADE EXTRUSIONS**

DRAWING	PART NUMBER	DESCRIPTION				
	CP 0501	<p>BOTTOM WEIGHT BAR</p> <table border="1"> <tr> <th>LENGTH</th> <th>FINISH</th> </tr> <tr> <td>196"</td> <td>ML</td> </tr> </table>	LENGTH	FINISH	196"	ML
LENGTH	FINISH					
196"	ML					
	CP 1013	<p>BOTTOM WEIGHT BAR</p> <table border="1"> <tr> <th>LENGTH</th> <th>FINISH</th> </tr> <tr> <td>196"</td> <td>AB, AN, BK, DB</td> </tr> </table>	LENGTH	FINISH	196"	AB, AN, BK, DB
LENGTH	FINISH					
196"	AB, AN, BK, DB					
	CP 7808	<p>BOTTOM WEIGHT BAR</p> <table border="1"> <tr> <th>LENGTH</th> <th>FINISH</th> </tr> <tr> <td>171"</td> <td>ML</td> </tr> </table>	LENGTH	FINISH	171"	ML
LENGTH	FINISH					
171"	ML					
	FR 7025	<p>BOTTOM WEIGHT BAR</p> <table border="1"> <tr> <th>LENGTH</th> <th>FINISH</th> </tr> <tr> <td>194"</td> <td>AN, WH</td> </tr> </table>	LENGTH	FINISH	194"	AN, WH
LENGTH	FINISH					
194"	AN, WH					

**NOTE:** Additional finishes available on request.

FINISHES: **AB**-Alabaster, **AN**-Anodized, **BK**-Brite Black, **DB**-Dark Bronze, **ML**-Mill, **WH**-White

CUSTOMER SERVICE • PHONE: 888-501-8689 FAX: (416) 798-1094



DRAWING	PART NUMBER	DESCRIPTION				
	CP 6010	<p>CEILING TRACK</p> <table border="1"> <thead> <tr> <th>LENGTH</th> <th>FINISH</th> </tr> </thead> <tbody> <tr> <td>236"</td> <td>AN</td> </tr> </tbody> </table>	LENGTH	FINISH	236"	AN
LENGTH	FINISH					
236"	AN					
	CP 7920	<p>BRACKET</p> <table border="1"> <thead> <tr> <th>LENGTH</th> <th>FINISH</th> </tr> </thead> <tbody> <tr> <td>236"</td> <td>AN</td> </tr> </tbody> </table>	LENGTH	FINISH	236"	AN
LENGTH	FINISH					
236"	AN					

**NOTE:** Additional finishes available on request.

FINISHES: AN-Anodized

CUSTOMER SERVICE • PHONE: 888-501-8689 FAX: (416) 798-1094

info@extrude-a-trim.com www.extrude-a-trim.com