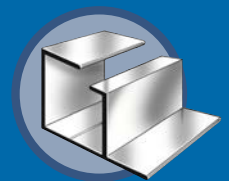
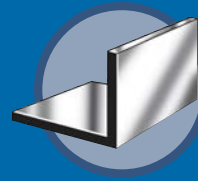
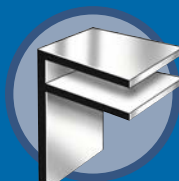
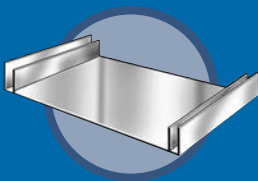
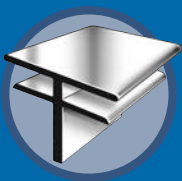


EX SIGN EXTRUSIONS



RIGHT SHAPES

RIGHT PRICE

RIGHT NOW



DRAWING	PART NUMBER	DESCRIPTION
	SE 1001	<p>CHANNEL EX-1 6" WITH 1/4" SLOT</p> <p>LENGTH FINISH</p> <p><u>24'-3" (291")</u> <u>AN, ML</u></p>
	SE 1002	<p>CHANNEL BOX FRAME EX-2 7 1/2"</p> <p>LENGTH FINISH</p> <p><u>24'-3" (291")</u> <u>AN, ML</u></p>
	SE 1003	<p>ANGLE EX-3 1" x 1" x .062"</p> <p>LENGTH FINISH</p> <p><u>24'-3" (291")</u> <u>AN, ML</u></p>
	SE 1005	<p>F-CHANNEL EX-5 1 1/2" x 1" x 1/4" SLOT</p> <p>LENGTH FINISH</p> <p><u>24'-3" (291")</u> <u>AN, ML</u></p>
	SE 1006	<p>ANGLE EX-6 1 1/4" x 1" x 0.93"</p> <p>LENGTH FINISH</p> <p><u>24'-3" (291")</u> <u>AN, ML</u></p>

NOTE: Additional finishes available on request.

FINISHES: **AN**-Anodized, **ML**-Mill

CUSTOMER SERVICE • PHONE: 888-501-8689 FAX: (416) 798-1094



DRAWING	PART NUMBER	DESCRIPTION				
	SE 1007	<p>FRAME EX-7 1 1/2" FACE</p> <table> <tr> <td>LENGTH</td> <td>FINISH</td> </tr> <tr> <td>24'-3" (291")</td> <td>AN, ML</td> </tr> </table>	LENGTH	FINISH	24'-3" (291")	AN, ML
LENGTH	FINISH					
24'-3" (291")	AN, ML					
	SE 1008	<p>CHANNEL EX-8 8.125" x 1/4" SLOT</p> <table> <tr> <td>LENGTH</td> <td>FINISH</td> </tr> <tr> <td>24'-3" (291")</td> <td>AN, ML</td> </tr> </table>	LENGTH	FINISH	24'-3" (291")	AN, ML
LENGTH	FINISH					
24'-3" (291")	AN, ML					
	SE 1011	<p>DIVIDER EX-11 1.625" x 1.2"</p> <table> <tr> <td>LENGTH</td> <td>FINISH</td> </tr> <tr> <td>24'-3" (291")</td> <td>AN, ML</td> </tr> </table>	LENGTH	FINISH	24'-3" (291")	AN, ML
LENGTH	FINISH					
24'-3" (291")	AN, ML					
	SE 1012	<p>FRAME EX-12 1" FACE</p> <table> <tr> <td>LENGTH</td> <td>FINISH</td> </tr> <tr> <td>24'-3" (291")</td> <td>AN, ML</td> </tr> </table>	LENGTH	FINISH	24'-3" (291")	AN, ML
LENGTH	FINISH					
24'-3" (291")	AN, ML					

NOTE: Additional finishes available on request.

FINISHES: AN-Anodized, ML-Mill

CUSTOMER SERVICE • PHONE: 888-501-8689 FAX: (416) 798-1094



DRAWING	PART NUMBER	DESCRIPTION				
	SE 1013	<p>FRAME EX-13 2.25" FACE</p> <table border="0"> <tr> <td>LENGTH</td> <td>FINISH</td> </tr> <tr> <td><u>24'-3" (291")</u></td> <td><u>AN, ML</u></td> </tr> </table>	LENGTH	FINISH	<u>24'-3" (291")</u>	<u>AN, ML</u>
LENGTH	FINISH					
<u>24'-3" (291")</u>	<u>AN, ML</u>					
	SE 1014	<p>CHANNEL EX-14 4" WITH 1/4" SLOT</p> <table border="0"> <tr> <td>LENGTH</td> <td>FINISH</td> </tr> <tr> <td><u>24'-3" (291")</u></td> <td><u>AN, ML</u></td> </tr> </table>	LENGTH	FINISH	<u>24'-3" (291")</u>	<u>AN, ML</u>
LENGTH	FINISH					
<u>24'-3" (291")</u>	<u>AN, ML</u>					

NOTE: Additional finishes available on request.

FINISHES: **AN**-Anodized, **ML**-Mill

CUSTOMER SERVICE • PHONE: 888-501-8689 FAX: (416) 798-1094