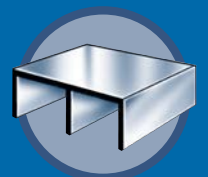
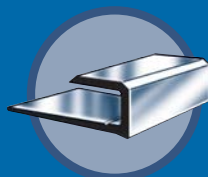
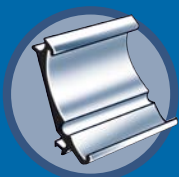
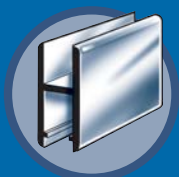


EXTRUDE•A•TRIM
The Aluminum Warehouse

SHOWCASE TRACK SYSTEMS



RIGHT SHAPES

RIGHT PRICE

RIGHT NOW



DRAWING	PART NUMBER	DESCRIPTION
BOTTOM TRACK - Sliding		
	EM 3140 BT	1/2" SLIDING TRACK BOTTOM <u>LENGTH</u> <u>FINISH</u> 12' AN
	EM 3142 BT	1/4" SLIDING TRACK BOTTOM <u>LENGTH</u> <u>FINISH</u> 12' AN
BOTTOM TRACK		
	FR 3600 BT	1/4" BOTTOM TRACK <u>LENGTH</u> <u>FINISH</u> 12' AN, BC, BS
	FR 3601	BOTTOM TRACK USE WITH FR 3600TP & FR 3611 <u>LENGTH</u> <u>FINISH</u> 12' AN, BC, BS
	FR 3606	TRACK INSERT FITS INTO FR 3600TP <u>LENGTH</u> <u>FINISH</u> 8' AN 12' AN
	FR 3615	BOTTOM TRACK USE WITH FR 3700TP <u>LENGTH</u> <u>FINISH</u> 12' AN
	FR 3617	BOTTOM TRACK USE WITH FR 3700TP <u>LENGTH</u> <u>FINISH</u> 12' AN

FINISHES: AN-Anodized, BC-Brite Clear, BK-Brite Black, BS-Brass, BZ-Bronze, ML-Mill, SB-Satin Black, SS-Stainless Steel Brushed

CUSTOMER SERVICE • PHONE: 888-501-8689 FAX: (416) 798-1094



DRAWING	PART NUMBER	DESCRIPTION				
TOP TRACK - Sliding						
	EM 3140 TP	<p>1/2" SLIDING TRACK TOP</p> <table border="1"> <tr> <th>LENGTH</th> <th>FINISH</th> </tr> <tr> <td>12'</td> <td>AN</td> </tr> </table>	LENGTH	FINISH	12'	AN
LENGTH	FINISH					
12'	AN					
	EM 3142 TP	<p>1/4" SLIDING TRACK TOP</p> <table border="1"> <tr> <th>LENGTH</th> <th>FINISH</th> </tr> <tr> <td>12'</td> <td>AN</td> </tr> </table>	LENGTH	FINISH	12'	AN
LENGTH	FINISH					
12'	AN					
TOP TRACK						
	FR 3600 TP	<p>1/4" TOP TRACK</p> <table border="1"> <tr> <th>LENGTH</th> <th>FINISH</th> </tr> <tr> <td>12'</td> <td>AN, BC, BS</td> </tr> </table>	LENGTH	FINISH	12'	AN, BC, BS
LENGTH	FINISH					
12'	AN, BC, BS					
	FR 3700 TP	<p>TOP TRACK</p> <table border="1"> <tr> <th>LENGTH</th> <th>FINISH</th> </tr> <tr> <td>12'</td> <td>AN, BC</td> </tr> </table>	LENGTH	FINISH	12'	AN, BC
LENGTH	FINISH					
12'	AN, BC					
GASKET						
	FR 2955	<p>VINYL GASKET FOR 1/4" MATERIAL SOLD IN ROLLS OF 250' OR BY THE FOOT <u>AVAILABLE IN CLEAR OR GREY</u></p>				
	FR 147SIL04	<p>CO-EXTRUDED PVC SILENCER FOR USE ON 1/4" GLASS <u>AVAILABLE IN GREY</u></p>				

FINISHES: AN-Anodized, BC-Brite Clear, BK-Brite Black, BS-Brass, BZ-Bronze, ML-Mill, SB-Satin Black, SS-Stainless Steel Brushed

CUSTOMER SERVICE • PHONE: 888-501-8689 FAX: (416) 798-1094



DRAWING	PART NUMBER	DESCRIPTION				
SHOE						
	FR 3611	SHOE TRACK - USE WITH FR 3600TP AND FR 3601BT <table border="1"> <thead> <tr> <th>LENGTH</th> <th>FINISH</th> </tr> </thead> <tbody> <tr> <td>12'</td> <td>AN, BC, BS</td> </tr> </tbody> </table>	LENGTH	FINISH	12'	AN, BC, BS
LENGTH	FINISH					
12'	AN, BC, BS					
	FR 3616	SHOE TRACK - USE WITH FR 3700TP, FR 3615 OR FR 3617 <table border="1"> <thead> <tr> <th>LENGTH</th> <th>FINISH</th> </tr> </thead> <tbody> <tr> <td>12'</td> <td>AN</td> </tr> </tbody> </table>	LENGTH	FINISH	12'	AN
LENGTH	FINISH					
12'	AN					
	FR 3618	SHOE TRACK - USE WITH FR 3700TP, FR 3615 OR FR 3617 <table border="1"> <thead> <tr> <th>LENGTH</th> <th>FINISH</th> </tr> </thead> <tbody> <tr> <td>12'</td> <td>AN</td> </tr> </tbody> </table>	LENGTH	FINISH	12'	AN
LENGTH	FINISH					
12'	AN					
WHEELS						
	FR 137WHEEL FR 147WHEEL	STEEL BEARING FOR SHOWCASE SHOES NYLON WHEEL FOR SHOWCASE SHOES GREY MINIMUM QUANTITY 50 PIECES				
END CAP						
	FR 147CAP	CHROME END CAP FOR SLIDING TRACK SYSTEM				

FINISHES: AN-Anodized, BC-Brite Clear, BK-Brite Black, BS-Brass, BZ-Bronze, ML-Mill, SB-Satin Black, SS-Stainless Steel Brushed

CUSTOMER SERVICE • PHONE: 888-501-8689 FAX: (416) 798-1094



DRAWING	PART NUMBER	DESCRIPTION
1/4" SLIDING TRACK SYSTEM		
	<p>FR 3600TP FR 2955 FR 3601 FR 3611 FR 147CAP FR 147SIL04 FR 147WHEEL</p>	<p>1/4" SLIDING TRACK SYSTEM IS MADE UP OF THESE COMPONENTS</p>

FINISHES: **AN**-Anodized, **BC**-Brite Clear, **BK**-Brite Black, **BS**-Brass, **BZ**-Bronze, **ML**-Mill, **SB**-Satin Black, **SS**-Stainless Steel Brushed

CUSTOMER SERVICE • PHONE: 888-501-8689 FAX: (416) 798-1094