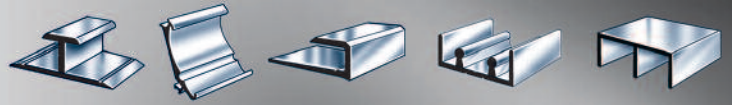


TICKET MOULDINGS

PART NUMBER	DESCRIPTION	DRAWING
EM 0140	<p>1 1/8" TICKET MOULDING.                      AVAILABLE IN 12' LENGTHS.                      250 lb. MINIMUM ORDER REQUIREMENT</p>	
EM 0141	<p>1 5/8" TICKET MOULDING.                      AVAILABLE IN 4', 8' and 12' LENGTHS.                      250 lb. MINIMUM ORDER REQUIREMENT</p>	
EM 0171	<p>1 1/8" TICKET MOULDING.                      AVAILABLE IN 12' LENGTHS.                      250 lb. MINIMUM ORDER REQUIREMENT</p>	
EM 0172	<p>1 1/4" TICKET MOULDING, SNAPS ON TO METAL SHELVING.                      AVAILABLE IN 12' LENGTHS</p>	

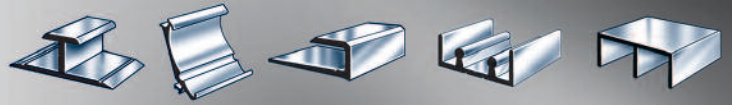
©2009 All drawings and part numbers are the property of Extrude-A-Trim, and may not be copied or reproduced or altered in any way without the expressed written approval of Extrude-A-Trim.



TICKET MOULDINGS

PART NUMBER	DESCRIPTION	DRAWING
EM 0173	1 1/8" TICKET MOULDING, SNAPS ON TO METAL SHELVING. AVAILABLE IN 12' LENGTHS	
EM 0175	1.25" TICKET MOULDING. AVAILABLE IN 12' LENGTHS.	
EM 0176	1 3/4" TICKET MOULDING. AVAILABLE IN 12' LENGTHS.	
EM 0177	1 1/4" TICKET MOULDING. AVAILABLE IN 8' AND 12' LENGTHS.	

©2009 All drawings and part numbers are the property of Extrude-A-Trim, and may not be copied or reproduced or altered in any way without the expressed written approval of Extrude-A-Trim.



TICKET MOULDINGS

PART NUMBER	DESCRIPTION	DRAWING
EM 0179	1 1/4" TICKET MOULDING. AVAILABLE IN 8' AND 12' LENGTHS.	
EM 0180	1 1/8" TICKET MOULDING. AVAILABLE IN 12' LENGTHS. 250 lb. MINIMUM ORDER REQUIREMENT	
EM 0182	1 1/8" RIB TICKET MOULDING. AVAILABLE IN 12' LENGTHS.	
EM 1002	2" AND 1 1/8" TICKET MOULDING. SNAPS ON TO METAL SHELVING. AVAILABLE IN 4', 8' AND 12' LENGTHS	

©2009 All drawings and part numbers are the property of Extrude-A-Trim, and may not be copied or reproduced or altered in any way without the expressed written approval of Extrude-A-Trim.