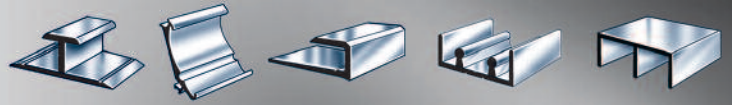


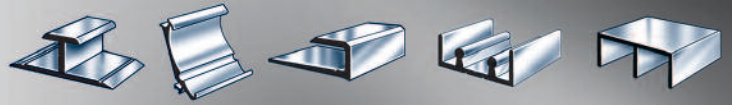
| PART NUMBER | DESCRIPTION | DRAWING |
|-----------------------------|--|---------|
| RUB RAILS BM 3000 | LOW PROFILE VINYL INSERT. FITS RUB RAILS BM 3002 AND BM 3004. ALL VINYL INSERTS ARE AVAILABLE IN A VARIETY OF COLOURS. PLEASE INQUIRE. | |
| BM 3005 | HIGH PROFILE VINYL INSERT. FITS BOTH RUB RAILS BM 3002 AND BM3004. ALL VINYL INSERTS ARE AVAILABLE IN A VARIETY OF COLOURS. PLEASE INQUIRE. | |
| BM 3002 | ALUMINUM RUB RAIL WITH 1/8" LIP AND A 1 1/4" HEIGHT. AVAILABLE IN 12' LENGTHS. | |
| BM 3004 | ALUMINUM RUB RAIL WITH 5/16" LIP AND A 1 1/4" HEIGHT. AVAILABLE IN 12' LENGTHS. | |

©2009 All drawings and part numbers are the property of Extrude-A-Trim, and may not be copied or reproduced or altered in any way without the expressed written approval of Extrude-A-Trim.



| PART NUMBER | DESCRIPTION | DRAWING |
|-------------------------------------|---|---------|
| <p>ENDCAPS BM 3006</p> | <p>1 1/4" METAL ENDCAP FOR RUB RAILS BM 3002 AND BM 3004.</p> | |
| <p>BM 3078</p> | <p>ALUMINUM AWNING RAIL 3/8" x 1 1/4". AVAILABLE IN 12' LENGTHS.</p> | |
| <p>BM 3079</p> | <p>ALUMINUM AWNING TRACK 2 7/8". AVAILABLE IN 20' LENGTHS. 250 LB. MINIMUM ORDER REQUIREMENT.</p> | |
| <p>DRIP RAIL BM 3300</p> | <p>ALUMINUM DRIP RAIL. AVAILABLE IN 10' AND 20' LENGTHS. IDEAL FOR TRAILER OR R.V. APPLICATIONS.</p> | |
| <p>BM 3400</p> | <p>ALUMINUM DRIP RAIL. AVAILABLE IN 12' AND 24' LENGTHS. IDEAL FOR TRAILER OR R.V. APPLICATIONS. 250 LB. MINIMUM ORDER REQUIREMENT.</p> | |

©2009 All drawings and part numbers are the property of Extrude-A-Trim, and may not be copied or reproduced or altered in any way without the expressed written approval of Extrude-A-Trim.



| PART NUMBER | DESCRIPTION | DRAWING |
|---------------------------------|---|---------|
| SLIDING TRACK BM 1642 | ALUMINUM SLIDING TRACK, 1/2" x 1". AVAILABLE IN 12' LENGTHS. 250 LB. MINIMUM ORDER REQUIREMENT. | |
| BM 3062 | ALUMINUM SLIDING TRACK, 3/4" x 1 1/4". AVAILABLE IN 12' LENGTHS. 250 LB. MINIMUM ORDER REQUIREMENT. | |
| BM 3084 | ALUMINUM SLIDING TRACK. AVAILABLE IN 12' LENGTHS. | |
| BM 3085 | ALUMINUM SLIDING TRACK. AVAILABLE IN 12' LENGTHS. MINIMUM ORDER REQUIREMENTS MAY APPLY. 250 LB. MINIMUM ORDER REQUIREMENT. | |

©2009 All drawings and part numbers are the property of Extrude-A-Trim, and may not be copied or reproduced or altered in any way without the expressed written approval of Extrude-A-Trim.